

STRAND MOUNT POWER SUPPLY [PSS-xxW-xx-x]

Cable Products, Power Supplies



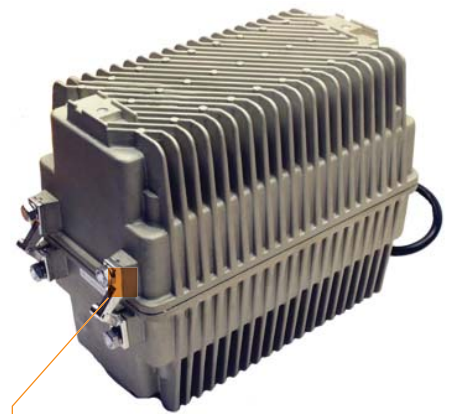
Description

The Taikan PSP/PSS Series non-standby power supply units provide conditioned power to signal amplifiers in CATV and broadband distribution systems. Designed in a durable anodized aluminum housing (power coating available) with a high quality ferroresonant transformer, the PSP/PSS Series are available in both pole mount and strand mount versions.

Taikan's non-standby power supplies have an efficiency rating of 90% or better, and are consistently reliable in terms of trouble-free maintenance and operation.

PSP/PSS Series utilize the ferroresonant transformer technology to provide line conditioning and voltage regulation (output - quasi square wave form).

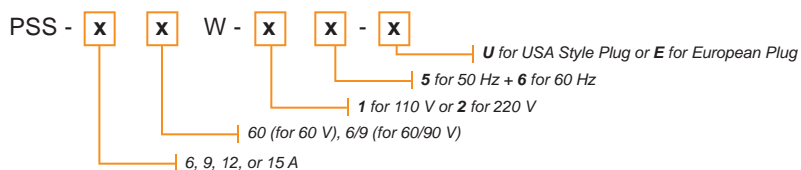
The ferroresonant transformer design supplies the load with current-limited, regulated voltage free from spikes, surges and other forms of power line transients.



Features

- Used for CATV / Broadband Networks Requiring an Efficient, Non-standby Power Supply; Ideally Suited for Strand Mounting Use
- Ferroresonant Design Provides Fully Regulated Output Voltage in a Quasi-Square Wave Form
- Overload Surge and Short Circuit Protection (Auto Reset Function) and Current Limiting Capability
- Auto Stable Function - Input Voltage Variation +/- 20% and Output Voltage Regulation +/- 3%. Other Input / Output Variability Available
- Housing Designed with Anodized Aluminum Material with Powder Coating (Available Option) for Durability and Corrosion Resistance
- Safety and Protection Features Based on Industry Standards
- Additional Features Include an External Lock and Internal Power Switch
- CE Certified
- **Additional Specifications Available Upon Request**

Ordering Information



Model Number	Standard Carton	Dimensions	Carton Weight
PSS-xxW-xx-x	1 pc	28 x 16 x 22 cm / 11 x 6.3 x 8.6 in.	18 kg / 40 lbs

Features	PSS-660W-xx-x	PSS-960W-xx-x	PSS-1260W-xx-x	PSS-1560W-xx-x	PSS-1569W-xx-x
Output Power	360 W	540 W	720 W	900 W	900 W
Output Current	6 A	9 A	12 A	15 A	15 A / 10 A
Output Voltage	60 V				60 V / 90 V
Output Waveform	Quasi-Square Wave				
Input Power Supply	110 V ± 20% or (220 V ± 20%)				
Input Frequency	50 / 60 Hz				
Protection	Short Circuit Protection // Overload Current Limit // Start-up Output Delay // Output Surge Protection				
Operating Temperature	-40 °C ~ 55 °C (-40 °F ~ 131 °F)				

